



In 1995, the Coffin Butte Resource Project began operation with a goal of providing clean green power to electric utility cooperatives. The Coffin Butte Resource Project is owned and operated by 12 members of Power Resource Cooperative.

The plant generates renewable power from landfill gas, a natural by-product of the decaying organic matter in the landfill. Use of landfill gas as an energy resource for clean power is growing; Coffin Butte is one of the hundreds of landfill gas-to-energy sites in the United States.

An expansion project that included enlarging the Coffin Butte power plant and installing two 20-cylinder Caterpillar engines was completed in fall of 2007. The goal is to take advantage of an increasing supply of landfill gas to produce electricity.

Because Coffin Butte produces power from organic matter, it is a clean, renewable power resource. Coffin Butte has been recognized by the U.S. Environmental Protection Agency (EPA) as one of the most efficient projects in the country.



Owned and operated by Power Resources Cooperative; expertise is provided by PNGC Power

## Community Support Fuels Green Power

Strong customer support for green power, availability of landfill gas and other favorable factors will promote future expansion of Coffin Butte. Such success serves as an incentive for other utilities to develop and operate new renewable resources as alternatives for customers in the Northwest. For more information on the Coffin Butte Resource Project or on how you can purchase and support green power generated at Coffin Butte please contact your local cooperative.

[www.pngcpower.com](http://www.pngcpower.com)  
click on "Innovation"

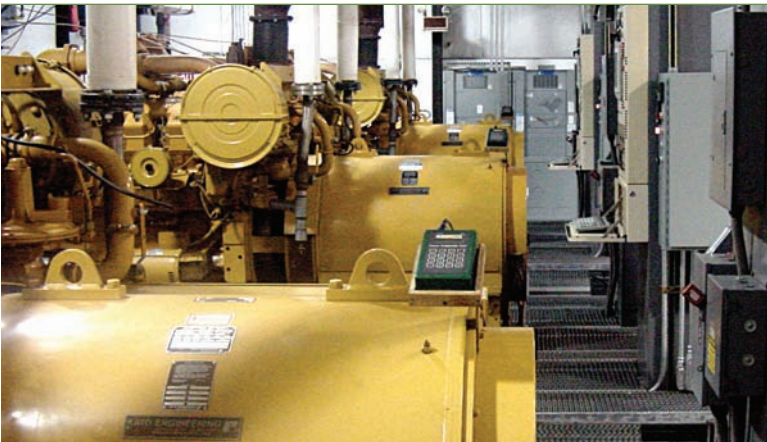
**Coffin Butte Resource Project**  
29160 Coffin Butte Road  
Corvallis, Oregon 97330  
541.745.3812

Printed on recycled paper.



Generating  
**RENEWABLE POWER**  
for our Communities





## Transforming Landfill Gas into Clean, Renewable Power

How does the Coffin Butte Resource Project generate power from a landfill? Gas is collected from the neighboring Valley Landfills, Inc. and is used to fuel internal combustion Caterpillar engines. The engines drive generators that produce electricity for thousands of households in our community. This resource is a superior, cost-effective renewable because it produces energy 95 percent of the time.

## A Source Of Green Power for Participating Utilities

Coffin Butte's 12 Northwest utility cooperative owners have an opportunity to offer their customers a way to purchase and thereby support green, or renewable power.

### Coffin Butte owners include:

- Benton Rural Electric Association (Prosser, Washington)
- Blachly-Lane Electric Cooperative (Eugene, Oregon)
- Central Electric Cooperative (Redmond, Oregon)
- Clearwater Power Company (Lewiston, Idaho)
- Consumers Power Inc. (Philomath, Oregon)
- Coos-Curry Electric Cooperative (Port Orford, Oregon)
- Douglas Electric Cooperative (Roseburg, Oregon)
- Fall River Rural Electric Cooperative (Ashton, Idaho)
- Lost River Electric Cooperative (Mackay, Idaho)
- Raft River Rural Electric Cooperative (Malta, Idaho)
- Umatilla Electric Cooperative (Hermiston, Oregon)
- West Oregon Electric Cooperative (Vernonia, Oregon)

## Coffin Butte Fast Facts

- Valley Landfills, Inc., adjacent to the Coffin Butte Resource Project, receives about 550,000 tons of waste each year from twelve counties in western Oregon.
- Three 16-cylinder Caterpillar engines and two 20-cylinder Caterpillar engines are fueled by landfill gas from the municipal waste.
- The 9,000 square-foot plant has a total generating capacity of 5.66 megawatts of power – enough to provide 4,000 average-sized homes with electricity.
- Every kilowatt-hour of energy generated means one less kilowatt-hour potentially generated by fossil-fueled power plants.

*“The Coffin Butte Resource Project allows each of its cooperatives the opportunity to offer a green power subscription choice to their membership. In these times, that commitment to a renewable resource is important.”*

– Roman Gillen, President and CEO,  
Consumers Power, Philomath, Oregon

